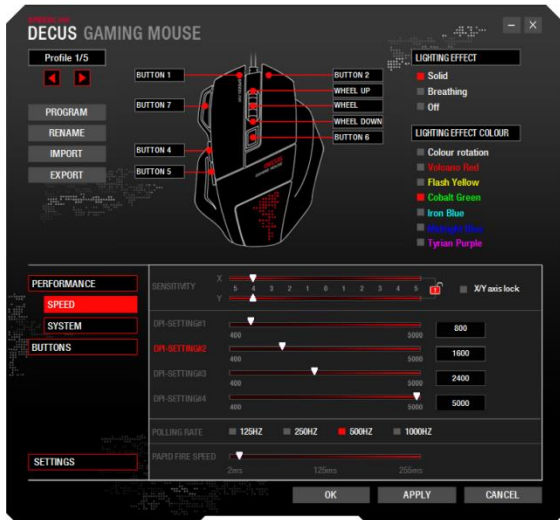
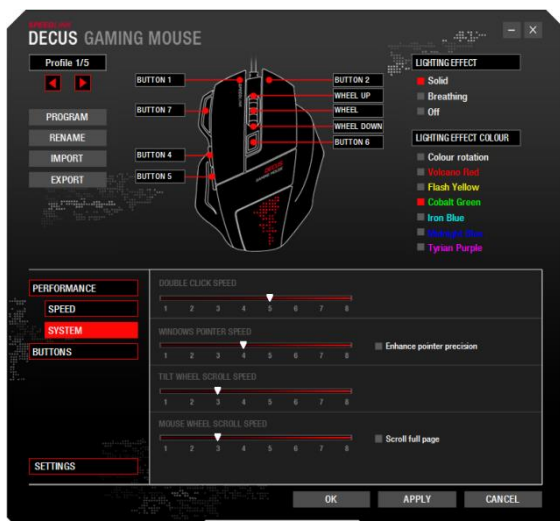


In the upper left corner you can switch between five different profiles. Below, you have the opportunity to choose a program, which when it starts, activates the respective profile. Also, you can rename, import and export the profile. On the pictured mouse, you're able to choose the button, which you want to assign with a different function. The right side offers colour selection and light effects.

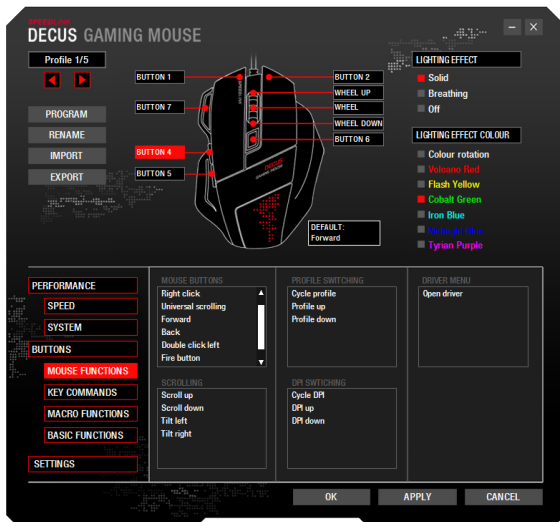


In the index tab "Speed" you can adjust the Sensitivity, DPI, polling rate and the Rapid Fire Speed.

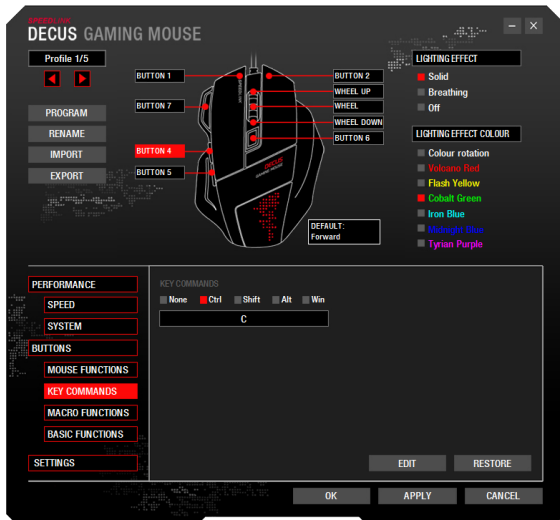


The normal Windows mouse settings are available in "System":

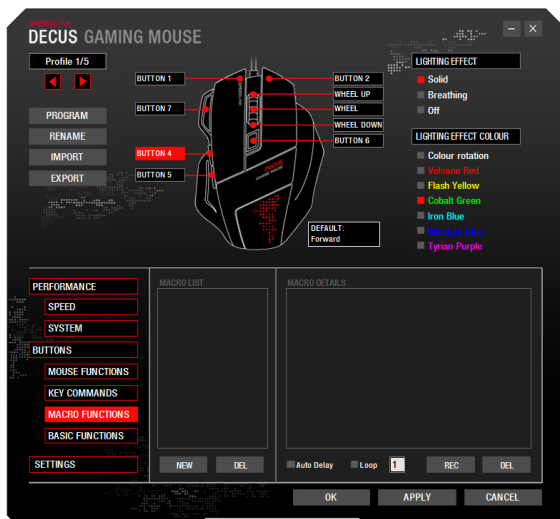
- Double click speed
- Cursor speed
- Scroll wheel tilt speed
- Scroll speed



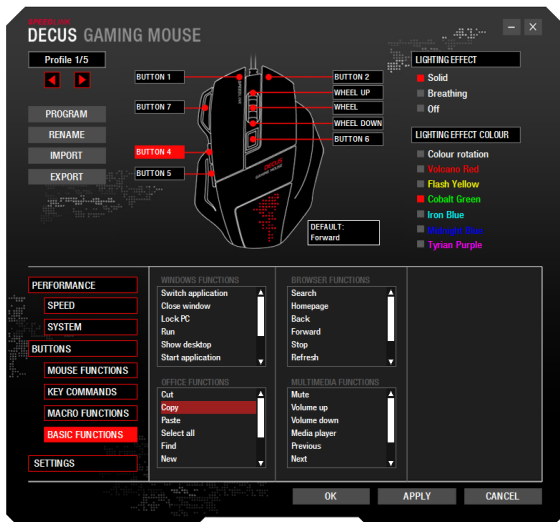
You can apply new functions to the buttons in the index tab “Mouse Functions”.



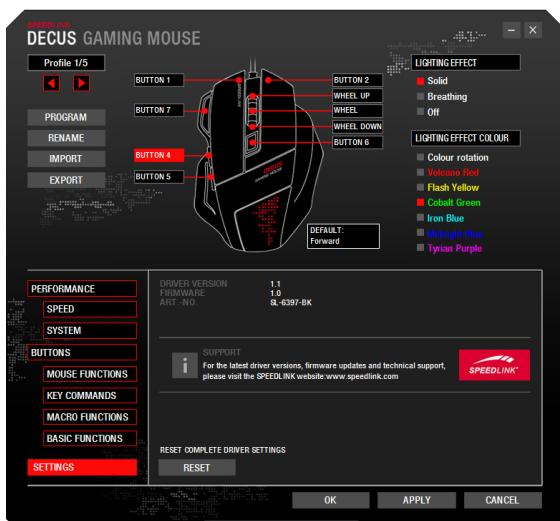
Here you can apply certain shortcuts. Just select the required command boxes and insert the button below.



Click 'NEW'. Name the macro and confirm by pressing the Enter key. Click 'RECORD' and enter your macro. The 'STOP' button replaces 'RECORD' in the meantime. Click the 'STOP' button to stop recording. Confirm by clicking 'APPLY'.



Advanced basic functions can be assigned to macro-capable buttons: Choose the desired function and confirm by clicking “APPLY”.



In the index tab “Settings” you can see the driver version, firmware and article number. Note below which refers to our support team. With the button reset you can perform a hardware reset.